



## *INSTALLATION GUIDE*

### *2009+ Audi A4 2.0T Dual Outlet Exhaust System*

Congratulations on your purchase of the AWE Tuning high performance exhaust for the 2009+ Audi A4 2.0T.

Exquisite build quality with industry leading performance distinguishes this exhaust system from all others.

*Contact us with any installation questions.*

*215-658-1670*

*AWE-Tuning.com*

*performance@AWE-Tuning.com*

### Exhaust System

- 1 inlet adapter (part EU)
- 1 mid muffler (part ET)
- 1 3.15" y-pipe section (part ER)
- 1 passenger side outlet tube, section B (part ED)
- 1 driver side rear Helmholtz resonator section (part EJ)
- 1 passenger side rear Helmholtz resonator section (part EK)
- 2 3.5" tip (optional finish)
- 6 63.5mm Accu-Seal clamp
- 2 2.50" t-bolt clamp
- 2 hanger lock collar
- 1 allen key
- 1 tube exhaust paste sealant

### Optional Downpipe

- 1 downpipe section with flex joint (part BC)
- 1 cat to downpipe gasket
- 3 M8 x 30mm stainless bolt
- 3 M8 copper exhaust nut
- 3 M8 washer

***Please note: If your car originally came equipped with a Single Outlet (driver side) exhaust, please visit our website for a list of factory parts necessary to install this Dual Outlet system.***

## Step 1

Installation of the AWE Tuning exhaust system is essentially the reverse of removal.

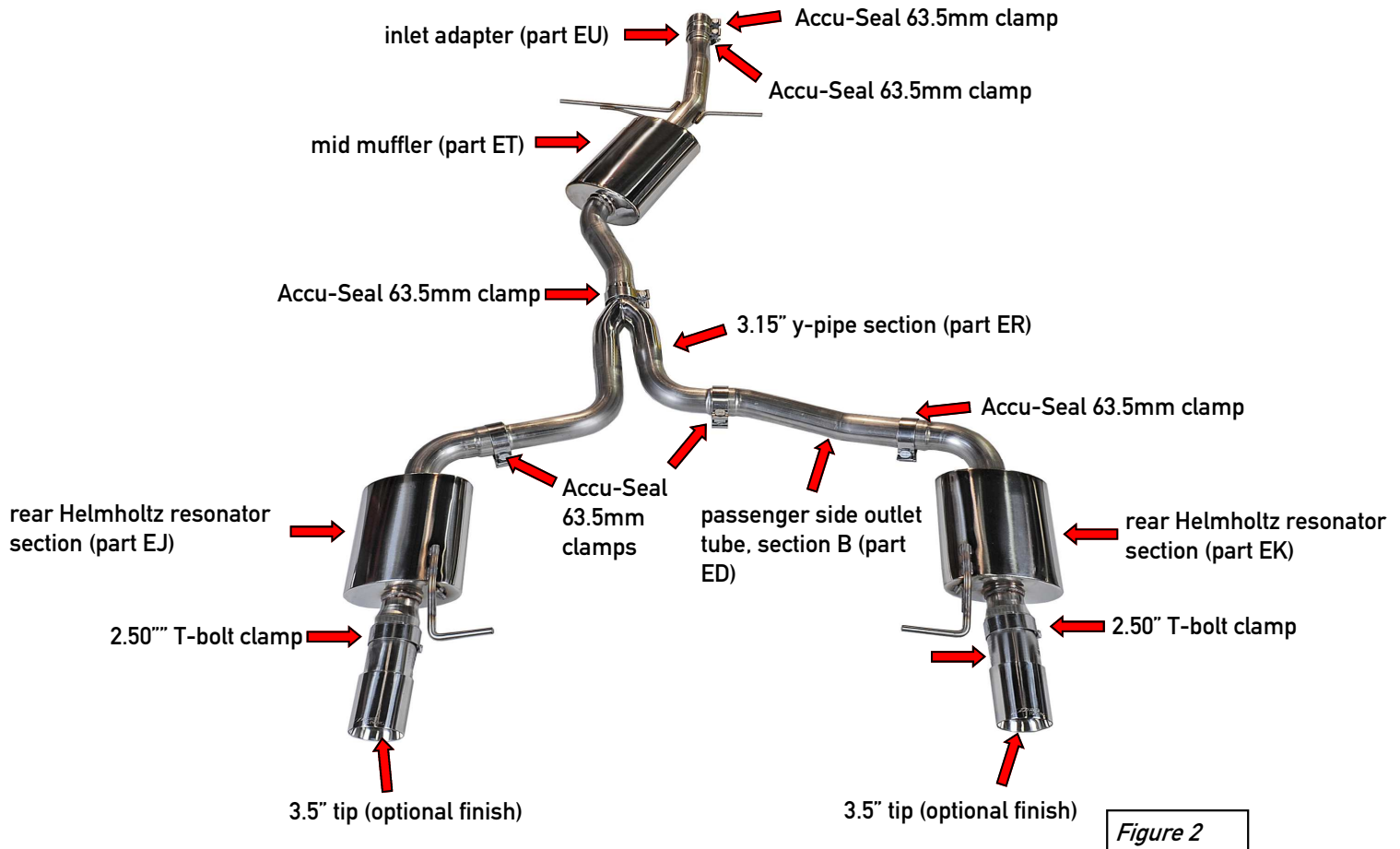
The AWE Tuning exhaust slips over top of the downpipe outlet, using a supplied 63.5mm clamp to fasten. To ensure a leak free seal at each slip joint throughout the system, use the enclosed exhaust paste sealant.

Before removing the factory downpipe, first soak the fasteners in a penetrating oil for several hours to ensure easy removal.

Fasteners are included with the optional downpipe to replace the factory parts. Use a quality anti-seize compound on all fastener threads during re-assembly.

## Step 2

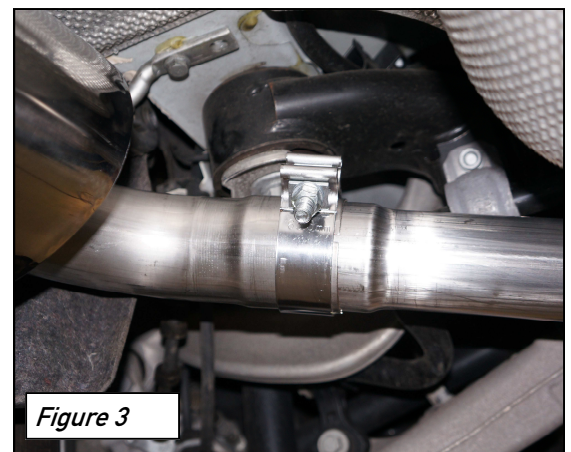
Install AWE Tuning exhaust parts as shown in **Figure 2** below. Refer to the Parts List on page 1. Note that there are several adjustment points on the AWE exhaust to ensure proper fitment. Also note that the factory exhaust hangers are also adjustable with slotted bolt holes to allow further fine tuning.



## Step 3

In order to center each tip in the bumper valance opening, the slip joint connections for the rear tubing and Helmholtz resonators must be set at minimal overlap.

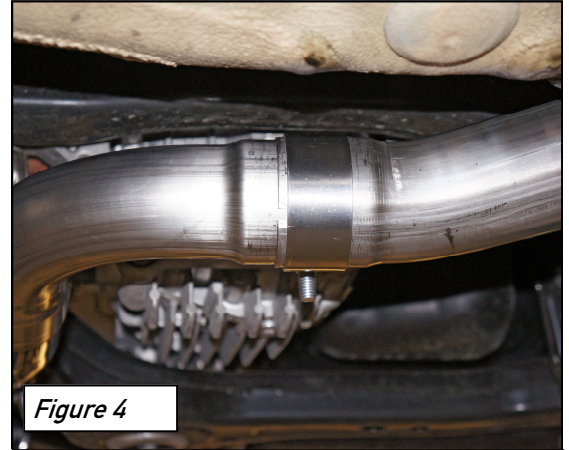
**Figure 3** shows the overlap between part ER and part EJ. Use an impact gun to tighten down this clamp after final adjustment.



## Step 4

In order to center each tip in the bumper valance opening, the slip joint connections for the rear tubing and Helmholtz resonators must be set at minimal overlap.

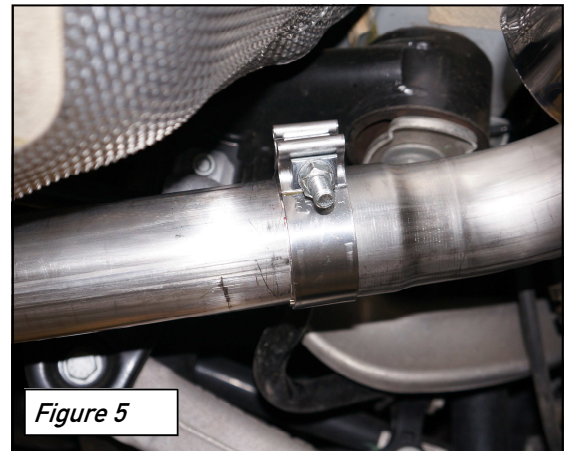
**Figure 4** shows the overlap between part ER and part ED. Use an impact gun to tighten down this clamp after final adjustment.



## Step 5

In order to center each tip in the bumper valance opening, the slip joint connections for the rear tubing and Helmholtz resonators must be set at minimal overlap.

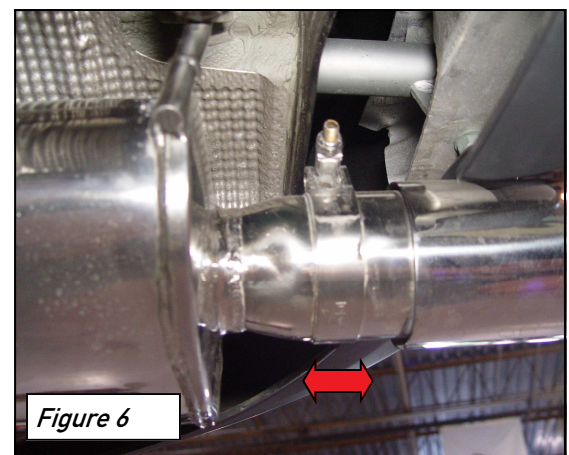
**Figure 5** shows the overlap between part ED and part EK. Use an impact gun to tighten down this clamp after final adjustment.



## Step 6

Each rear tip is rotationally adjustable to ensure that the AWE Tuning logo remains centered when the exhaust is installed, and also length adjustable to suit personal taste.

**When adjusting the length of the tips, make sure that the tip and tailpipe of the muffler overlap at least the width of the clamp (arrow in Figure 6).** *This overlap is very important to ensure that the clamp has enough surface area to tighten down to in order to keep the tip from falling off while driving!*

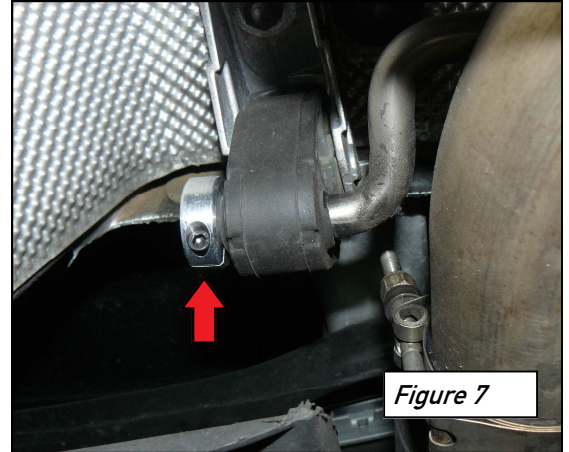


## Step 7

Once the exhaust system is properly adjusted, install a hanger post clamp on each of the rear muffler hanger posts, as shown at arrow in **Figure 7**. Slide the clamp onto the hanger post so that it sits snug against the rubber element, and then tighten down with the enclosed allen wrench.

These clamps will keep the exhaust from sliding laterally under usage and will keep the tips properly aligned in the valence openings.

Set final tip rotation, stagger, and overall length, and then tighten their T-bolt clamps.



## ENJOY

Once installed properly, your AWE Tuning high performance exhaust will provide a lifetime of trouble free performance.

Please note that the exhaust volume and sound will settle with usage. 800-1000 miles is typically required to fully break in a new exhaust system.

Also please note that the rear Helmholtz resonator has a small drain hole to allow condensation to escape. Water drops from this area are normal.

Periodic cleaning of exhaust tips is necessary to maintain proper finish, especially in areas prone to road salt and caustic deicing solutions. Use a mild soap and water solution or car wax to clean the finish. Avoid using metal polishes, as they can scratch the finish.



Any questions or comments,  
please do not hesitate to contact us:

1-888-565-2257  
AWE-Tuning.com  
performance@AWE-Tuning.com



AWE Tuning  
199 Precision Drive  
Horsham, PA 19044  
215-658-1670  
performance@AWE-Tuning.com

Thank you for choosing AWE Tuning as your performance automotive parts supplier. Please remember that a performance car is only as strong as its weakest link. Therefore, it is vital that you maintain your vehicle to factory specifications.

**By installing or using the purchased product, the Consumer accepts this warranty and any specific Manufacturer warranties enclosed.**

## Limited Warranty

The following warranty is valid only in the United States.

The Manufacturer's full warranty applies to all products sold.

Secor Ltd. (AWE Tuning) warrants to the original retail purchaser (Consumer) this product (B8 A4 2.0T Dual Outlet Exhaust, Resonated Downpipe) from date of original purchase, against manufacturing defects for:

ONE YEAR on tip finish

LIFETIME on balance of parts

Upon verification of warranty coverage, AWE Tuning will repair or replace the defective product at their discretion, without charge. This is the only remedy the Consumer has for any loss or damage, however arising, due to nonconformity in or defect of the product. This warranty does not cover consequential damage, loss of time or revenues, inconvenience, loss of use of vehicle, damage to the vehicle or components, shipping costs, or other incidental or indirect damage.

All warranties are void if the product was not installed by a certified auto mechanic, improperly serviced, modified, or used in a way not intended by the Manufacturer. Use of product in Motorsports or Racing conditions is grounds for warranty denial. Motorsports and Racing is an inherently abusive operational condition, and it is impossible to warranty for this type of usage.

The Consumer is responsible for ensuring that the product is installed in a safe and proper manner, and should cease usage of the product immediately if an unsafe or improper condition is noted. If an unsafe or improper condition is noted, the Consumer should then immediately contact the facility where the product was installed or AWE Tuning directly.

Please contact the original place of purchase for any warranty claims or explanations of this document.