

Installation instructions

For set # 4.3165

2005 Ford Mustang



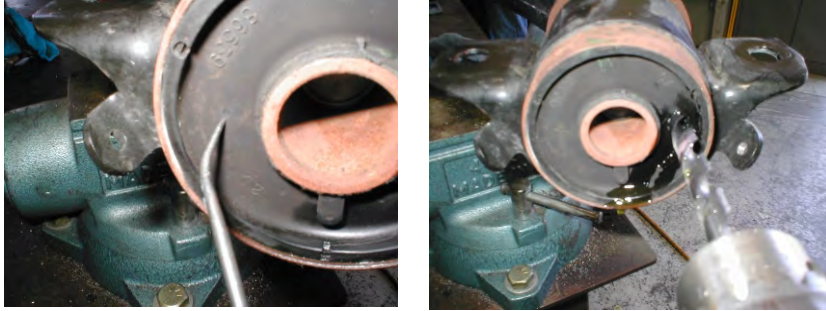
1131 VIA CALLEJON, SAN CLEMENTE, CA 92673

© 2006 Energy Suspension. All rights reserved.
 May not be reproduced, in any form, or by any means,
 without the written consent of Energy Suspension.

Note: It is recommended that this set be professionally installed if you are unfamiliar with this type of work, and a factory service manual be purchased prior to performing any work on your vehicle for proper disassembly, reassembly and torque specs. These instructions are intended for bushing removal and install of Energy Suspension polyurethane bushings, once you have removed the factory component from your vehicle.

Step 1: THIS IS THE MOST IMPORTANT STEP:

Using a pick, puncture the O.E.M bushing to relieve fluid pressure then drill a hole to drain the fluid.



Step 2: Apply heat to the outer metal shell until the rubber bond is broken. When you see a good amount of white smoke then the bond should be broken. At no time should there be a flame from the rubber, if there is then back off the heat. Slide the entire outer shell off the inner sleeve. Do not damage the outer shell because it must be re-used with bushing 3473.

NOTE: The inner cage needs to be removed from the outer shell and discarded prior to installing bushing 3473. As shown in picture below.



Step 3: Use a hacksaw to cut rubber as shown in picture. You can use a razor knife and pliers to remove the rest of the rubber by cutting and peeling it back. There is a thin fiberglass wrap on the metal sleeve that must also be removed.



Step 4: After all rubber and fiberglass has been removed, use a wire wheel as on a bench grinder to clean the sleeve. Then use sand paper to remove roughness of knurling on O.E sleeve as shown in picture.

Step 5: Apply heat to the front position inner sleeve and outer metal shell to break bond and push out the sleeve and rubber bushing.

NOTE: Do not remove the shell of the small bushing.

**O.E.M.SLEEVE
 Must Be Re-Used**



17509
 12/JUL/07

**APPLY GREASE TO ALL PARTS THAT CONTACT
 POLYURETHANE BUSHINGS PRIOR TO INSTALLATION**