

NOTES:

1.

THIS DRAWING DESCRIBES THE FUELAB 529xx SERIES ELECTRONIC FUEL PRESSURE REGULATOR.
2.

FEATURES INCLUDE:
 - COMPATIBLE WITH FUELAB PUMP MODELS 41401,41402, 41403, 42401, 42402, 91901, 92902 AND 10302 ONLY.
 - ONE -8AN INLET PORT, WITH FITTING (ON LEFT SIDE OF REGULATOR, AVAILABLE IN -6AN OR -8AN). FITTING IS INCLUDED AND INSTALLED.
 - ONE -8AN RETURN PORT, WITH RELIEF FITTING (ON RIGHT SIDE OF REGULATOR, AVAILABLE IN -6AN OR -8AN). FITTING IS INCLUDED AND INSTALLED.
 - ADDITIONAL 0-5 VOLT ANALOG OUTPUT, TO MONITOR OR RECORD PUMP CAPACITY.
 - BILLET ALUMINUM, STAINLESS STEEL CONSTRUCTION WITH FLUOROSILICONE DIAPHRAGM AND SEALS. PLUG AND FITTING ARE MADE OF UNPLATED BRASS.
3.

FUEL COMPATIBILITY INCLUDES:
 - GASOLINE (PUMP OR RACE)
 - METHANOL
 - ETHANOL (INCLUDING E85)
 - DIESEL
4.

UNIQUE SERIAL NUMBER DOES NOT CONTAIN DIRECT INFORMATION IN DETERMINING MODEL NUMBER. CONTACT FUELAB FOR DETERMINATION OF MODEL NUMBER BASED ON SERIAL NUMBER.
5.

BRACKET, PRESSURE ADJUSTMENT HARDWARE, BRACKET MOUNTING HARDWARE, GAUGE PORT PLUG, BARBED FITTING, MINI-CONNECTOR / WIRE HARNESS AND INSTRUCTIONS INCLUDED, BAGGED SEPARATELY FROM REGULATOR. INLET AND RETURN FITTINGS ARE INSTALLED. RETURN FITTING IS NOT A STANDARD AN UNION / REDUCER, AS IT CONTAINS ORIFACE AND RELIEF POPPET FOR PROPER VALVE OPERATION.
6.

REFERENCE DRAWING 1090201A1 FOR ASSEMBLY INSTRUCTIONS.
7.

SEE TABLES BELOW FOR DETERMINATION OF DESIRED MODEL NUMBER. VALVE ONLY WORKS WITH ONE (1) OR TWO (2) PRODIGY SERIES FUEL PUMPS.
8.

FOR TYPICAL EFI APPLICATIONS, PRESSURE REFERENCE PORT IS PLUMBED TO THE ENGINE'S INTAKE MANIFOLD. CHANGES IN AIR PRESSURE AT THIS PORT WILL RESULT IN A CHANGE IN FUEL PRESSURE AT A RATIO OF 1:1.

MODEL NUMBER SCHEME:

52901 - c

c = COLOR CODE
EFI ("E" PRESSURE RANGE)
ELECTRONIC FUEL PRESSURE
REGULATOR, -6AN INLET AND OUTLET

52902 - c

c = COLOR CODE
EFI ("E" PRESSURE RANGE)
ELECTRONIC FUEL PRESSURE
REGULATOR, -8AN INLET AND OUTLET

52903 - c - p

p = PRESSURE RANGE CODE
c = COLOR CODE
ELECTRONIC FUEL PRESSURE
REGULATOR, -6AN INLET AND OUTLET,
CUSTOM PRESSURE RANGE

52904 - c - p

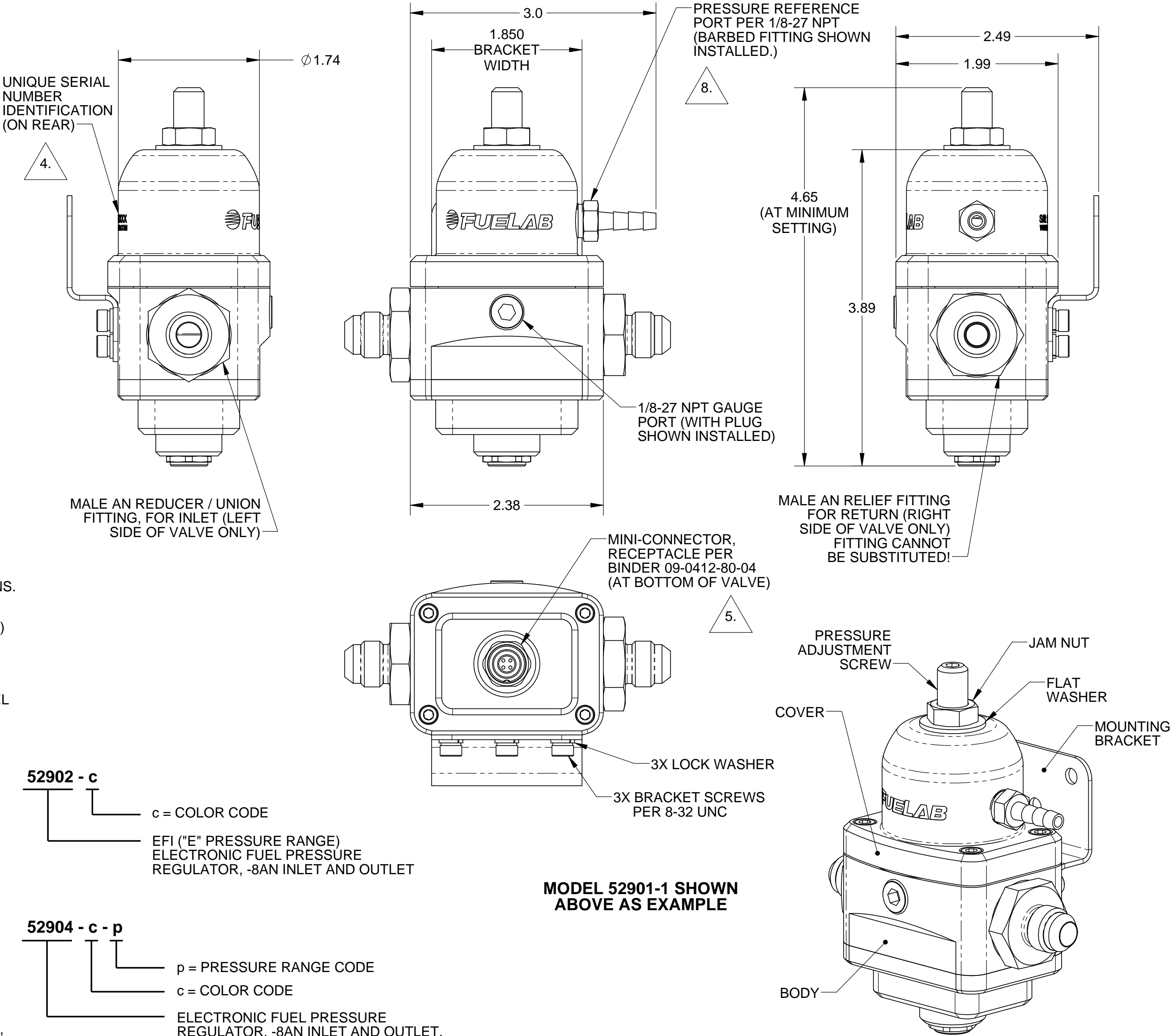
p = PRESSURE RANGE CODE
c = COLOR CODE
ELECTRONIC FUEL PRESSURE
REGULATOR, -8AN INLET AND OUTLET,
CUSTOM PRESSURE RANGE

PRESSURE RANGE CODE, p

p	APPROX. PRESSURE RANGE	CAPACITY
T	15-25 PSID (1.0 - 1.7 BAR)	UP TO TWO PUMPS
E	25-90 PSID (1.7 - 6.2 BAR)	UP TO TWO PUMPS
G	90-125 PSID (6.2 - 8.6 BAR)	UP TO TWO PUMPS


COLOR CODE, c

c	COVER COLOR	BODY COLOR
1	BLACK	BLACK
2	RED	CLEAR
3	BLUE	CLEAR
4	PURPLE	CLEAR
5	GOLD	BLACK
6	GREEN	CLEAR



MODEL 52901-1 SHOWN
ABOVE AS EXAMPLE

ISOMETRIC VIEW
(ALL VIEWS ARE SHOWN WITH
HARDWARE INSTALLED)

UNLESS OTHERWISE SPECIFIED: INTERPRET DWG PER ANSI Y14.5 DIMENSIONS ARE IN INCHES TOLERANCES: FRACTIONAL: ±1/64" ANGULAR: ± 1/2° DECIMALS: X ± 1 .XX ± .03 .XXX ± .010 SURFACE FINISH 128 ✓ OR BETTER BREAK ALL SHARP EDGES .010 MAX REMOVE ALL BURRS THIRD ANGLE PROJECTION DO NOT SCALE DRAWING			 FUELAB DIGITAL FUEL DELIVERY Litchfield, Illinois		
TITLE: ELECTRONIC REGULATOR, 529xx SERIES			REV A		
SIZE C			DWG. NO. 109020100		
SCALE: 1/1			WEIGHT: 1.3 LB SHEET: 1 OF 1		